

Universal 30 litre fuel reservoir with 3 partitions for performance hovercraft, racing boats, all terrain vehicles and other applications – The only available small fuel tank on market with partitions!

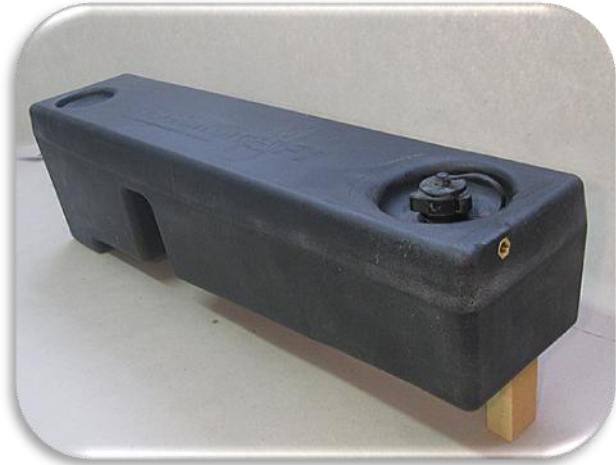
Fuel tank size specification:

- Max. length – 90 cm / 35.43 inch
- Max. width – 20.5 cm / 8 inch
- Max. height – 26 cm / 10.2 inch
- Reservoir capacity – 30 litres / 7.9 us galon
- Reservoir weight – 3 kg / 6.6 lbs
- 3 separate partitions to minimize fuel sloshing

Built-in brass connectors:

- 4 on bottom to attach reservoir
- 1 fuel pressure release
- 1 fuel supply connector

- Prepared cut-out, to fit standard instrumentation at the deepest point of reservoir for monitoring fuel level.
- Prepared for hose implants installation.



Fuel tank is fabricated in roto-molding technology, available in 2 optional materials:

- **HDPE ORANGE LINE fuel reservoir** fabricated from HDPE material (high-density polyethylene)
- **XPE RED LINE fuel reservoir** fabricated from XPE material (Cross-linked Polyethylene)
- **hose implants available in various dimensions**

For larger orders, custom colours are available as well as custom placement of implants for fuel pipes and fuel supplies.
Production capability 250 units/month, we ship worldwide!

Picture shows side-top view of reservoir. On left is circular cut-out for installation of fuel level monitoring instrumentation.



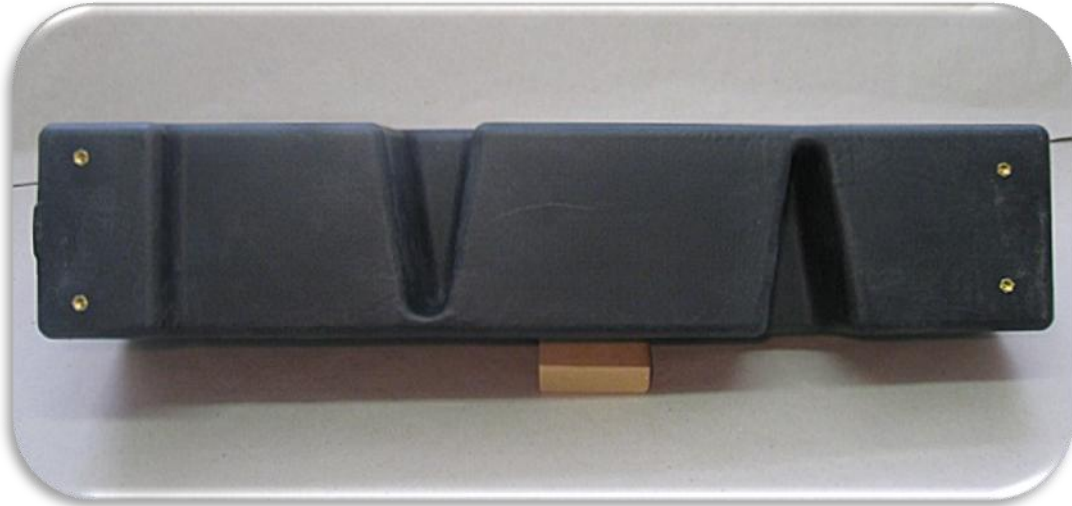
This is a reservoir side view, visible partition barrier height.

Payments from abroad:

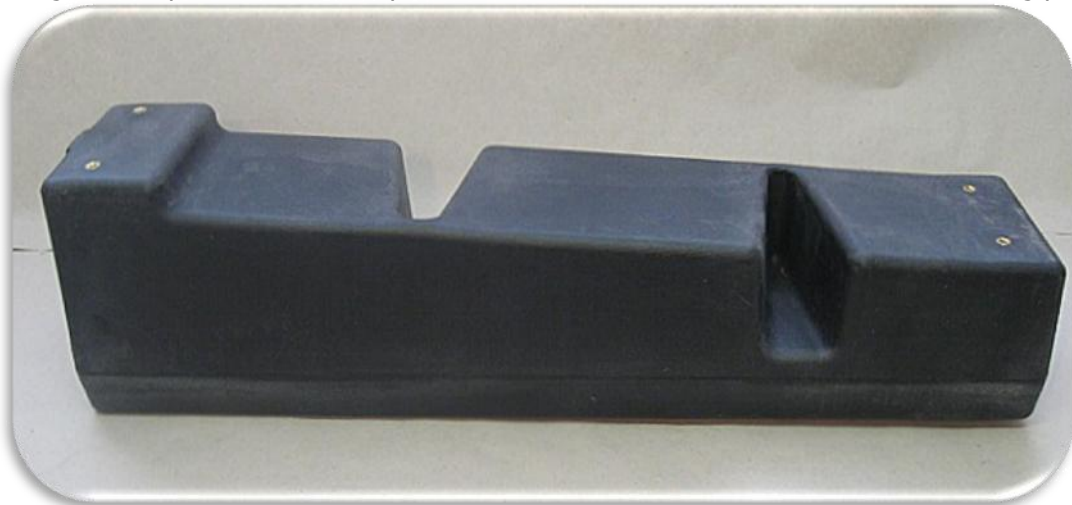
SKB BANKA LJUBLJANA D.D. Expozitura Vrhnika, Ljubljanska cesta 29, 1360 Vrhnika, Slovenia
 TRR: 03112-1000214139, IBAN: SI56031121000214139, swift: SKBASI2X



Bottom view of reservoir, visible are 4 brass mounting points and 2 partition barriers one from left another from right side of fuel tank for most effective minimizing of fuel sloshing.



This image shows partition barrier depth, side bottom view of reservoir with brass mounting points.



Payments from abroad:

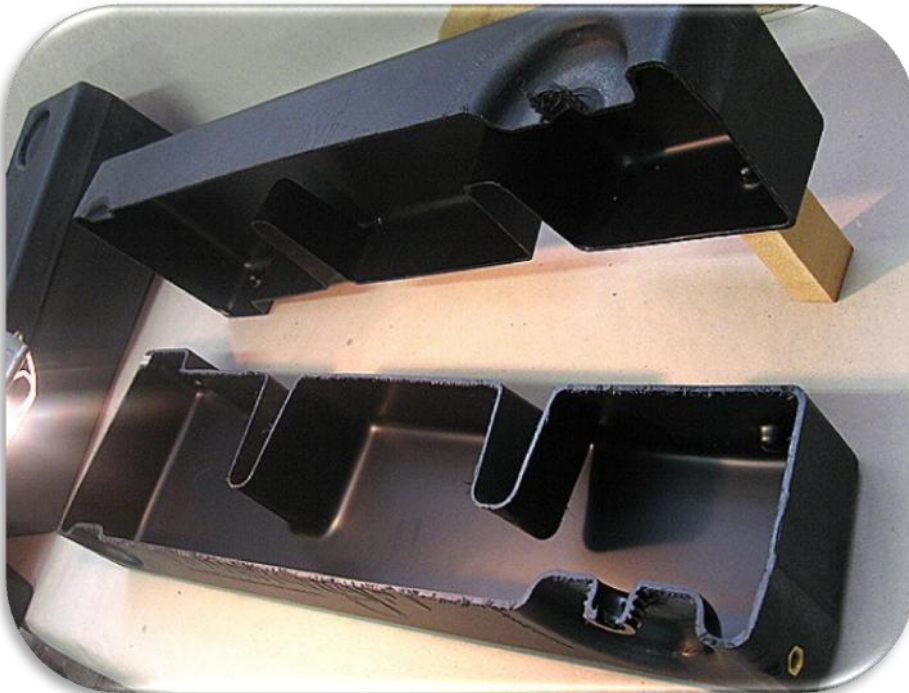
SKB BANKA LJUBLJANA D.D. Expozitura Vrhnika, Ljubljanska cesta 29, 1360 Vrhnika, Slovenia
TRR: 03112-1000214139, IBAN: SI56031121000214139, swift: SKBAS12X

What does the reservoir look like inside?

We'll have to cut one open to see ...



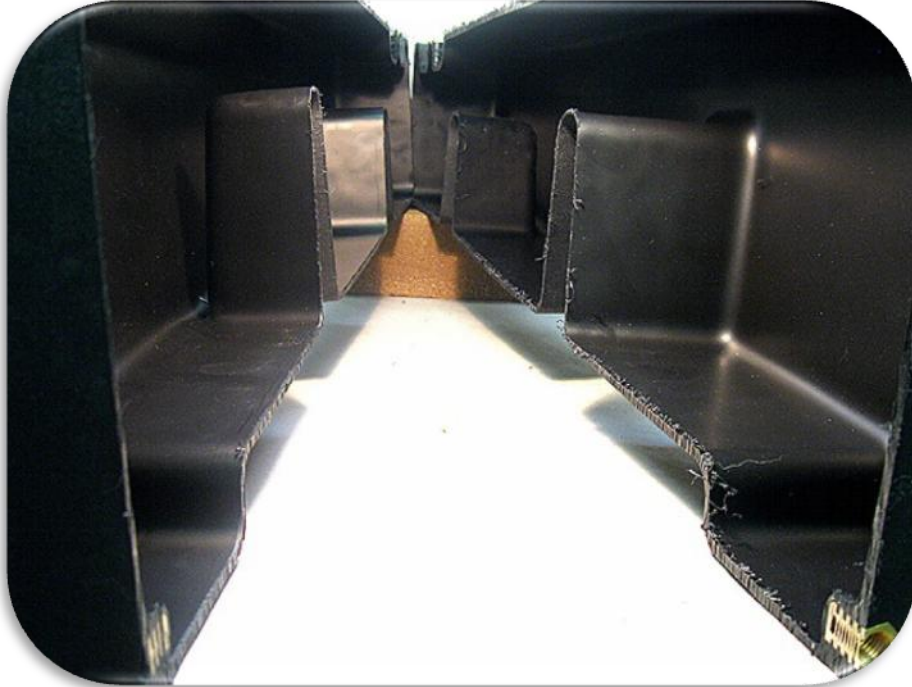
Image shows partition barriers, which disable fuel sloshing at sides, so fuel cannot go directly from one side of fuel tank to another side and negatively effect to performance of vehicle, but is stopped and moves slowly from one side to another.



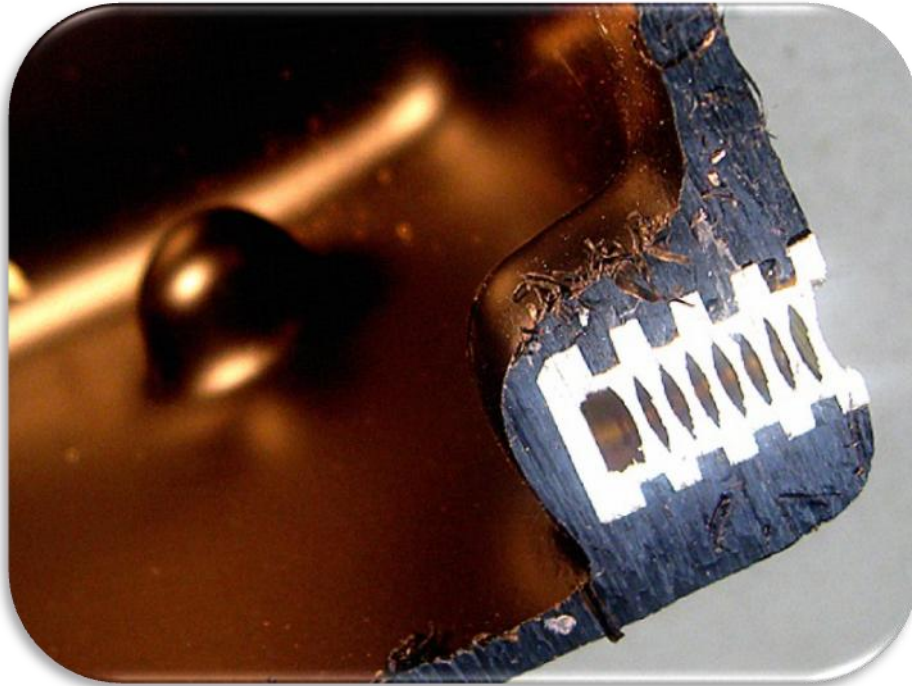
Payments from abroad:

SKB BANKA LJUBLJANA D.D. Expozitura Vrhnika, Ljubljanska cesta 29, 1360 Vrhnika, Slovenia
TRR: 03112-1000214139, IBAN: SI56031121000214139, swift: SKBAS12X

Another view of how the fuel tank looks from inside. At the bottom left corner of the image is visible a brass implant for fuel supply hose installation.



Detail photo of how implants are in built into the reservoir.



Payments from abroad:

SKB BANKA LJUBLJANA D.D. Expozitura Vrhnika, Ljubljanska cesta 29, 1360 Vrhnika, Slovenia
TRR: 03112-1000214139, IBAN: SI56031121000214139, swift: SKBASIX

This image shows a sample of installation of the fuel tank in our MAD-81 high performance hovercraft unit.



High performance hovercraft require lightweight fuel tanks with partitions, that minimize fuel sloshing, and allow you to ride uphill and downhill without fuel stoppage... This fuel tank is simply the best fuel tank on the market for high performance hovercraft and other vehicles.



If you find interest in our new fuel tank series do not hesitate to contact us via mail>>> info@mad-hovercraft.si or give us a call>>> +386-41-633-656

Payments from abroad:

SKB BANKA LJUBLJANA D.D. Expozitura Vrhnika, Ljubljanska cesta 29, 1360 Vrhnika, Slovenia
TRR: 03112-1000214139, IBAN: SI56031121000214139, swift: SKBAS12X